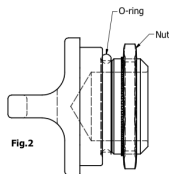
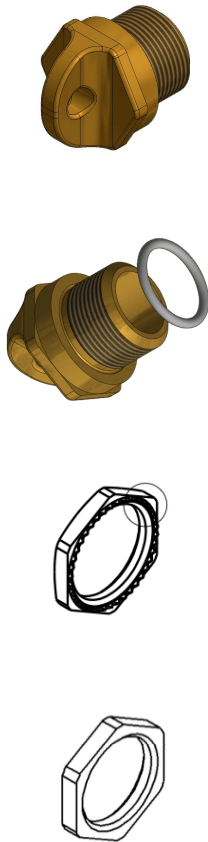
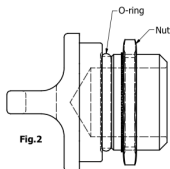


Technical specification for Safety plug SP20/12 - SP20/17 & SP25/12 - SP25/17

Date: 21.05.2024



SP20 & 25/12 with 12mm thread length




SP20 & 25/17 with 17mm thread length

 II 2G Ex eb IIC Gb/ II 2D Ex tb IIIC Db CE2460HLSecure-N6143 SP20-xxxx
Presafe 21 ATEX 28461X & IECEx PRE 21.0017X

 II 2G Ex eb IIC Gb/ II 2D Ex tb IIIC Db CE2460HLSecure-N6143 SP25-xxxx
Presafe 21 ATEX 28461X & IECEx PRE 21.0017X

Safety plugs is used as a secondary barrier for light fixtures and other electrical components that are mounted in height. It is mounted instead of a blanking plug and provides a solid mounting point for safety wire.

TECHNICAL DATA

Ex-protection:	 II 2G Ex eb IIC Gb/ II 2D Ex tb IIIC Db
Ingress protection:	-IP66 & 67
Entry threads:	-Metric, 20mm x 1.5 & 25mm x 1.5
Material plug:	-Brass, CuZn36Pb2As (CW602N)
Red O-ring:	-VMQ-silicone compound 714177
ERIKS industrial P&S	23mm x 2.5mm, SP25 (-40grC+ 135grC) 18mm x 2.5mm, SP20 (-40grC+ 135grC)
Notched lock nuts from S.I.B SOCIÉTÉ INDUSTRIELLE DE BOULAY.	-25mm, artikkel D 3425 000 i drawing Notched lock nuts ISO D 3400 000 rev B/ D 3400 100 rev B -20mm, D 3420 100 Nickel plated Brass CuZn39Pb2 / (40Pb3)
Option for non-metallic enclosures: Lock nuts fra S.I.B SOCIÉTÉ INDUSTRIELLE DE BOULAY.	-25mm, article D 4325 000 in drawing Lock nuts ISO D 4300 000 rev C / D 4300 100 rev C Brass CuZn39Pb2 / (40Pb3)

APPLICATION

- For use in metal and non-metallic enclosures
- Earth tag to be used in non-metallic enclosures
- Well suited for marine applications, offshore or onshore installations, and general industrial environments
- Available in two editions on SP25, 12mm and 17mm thread length with temperature area; -40grC+ 135grC with red silicone O ring temperature area; -20grC+ 135grC with green Viton O ring
- For SP20 only -40grC+ 135grC with red silicone O ring available

FEATURES AND BENEFITS

- O-ring located against a recess in the plug
- Notched lock nuts for good contact in enclosures
- Lock nut if non-metallic enclosures
- Made of brass and nickel plated brass. Well suited for a long life in harsh environments
- Breaking strength of the eye is tested to ca. 1500 kg

APPROVAL AND CERTIFICATES

- Presafe 21 ATEX 28461X & IECEx PRE 21.0017X
- CE 2460, DNV Presafe
- According to standards: IEC 60079-0:2017,
IEC 60079-7:2017 & IEC 60079-31: 2013

